



MORE THAN JUST **PROPERTY TAX MANAGEMENT** **SOFTWARE**



Powerful. Flexible. Smart. ➔



MORE THAN JUST PROPERTY TAX MANAGEMENT SOFTWARE

Real estate asset and property tax information at your fingertips for flexible and efficient property tax management, reporting and strategic decision-making

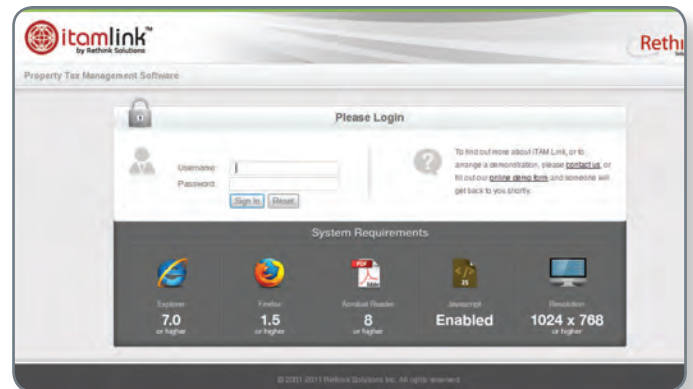
iTAM Link is a secure, web-based, property tax and assessment management software solution for multi-property or multi-tenant portfolios. iTAM Link supports the active management of real estate property assessment and taxation in today's global economy.



THE iTAM LINK DIFFERENCE

Optimizing and centralizing the property tax management process can result in immediate savings and have a long-term positive impact on a company's overall financial performance.

- ✓ Manage vast amounts of property tax and assessment data easily and economically
- ✓ Centralize and consolidate real estate data from multiple sources
- ✓ Gain instant access to both current and historical data and records
- ✓ Scale seamlessly with changes to the size and breadth of a portfolio
- ✓ Analyze and compare properties, parcels, buildings and/or tenants within a portfolio quickly and effortlessly



POWERFUL. FLEXIBLE. SMART.

Designed to be adaptable and flexible, iTAM Link can be customized to suit the specific real estate and property tax management needs of any business.

Industries currently using iTAM Link include:

- Commercial
- Industrial
- Retail
- Oil & Gas
- Telecommunications
- Recreation
- REITs
- Shopping Centers
- Hotels/Motels
- Nursing Homes
- Property Mgmt Cos.
- Restaurants
- Professional Orgs.
- Governments
- And much more

- ✔ Produce management reports across varying time periods, geographic regions and business units in order to identify opportunities for tax and cost reductions
- ✔ Eliminate the possibility of lost data, late fees, interest penalties and missed appeal rights by calendaring payment and appeal deadlines

- ✔ Share information among many users in real time to avoid confusion and duplication of effort
- ✔ Compare, analyze and track real estate portfolios in a variety of languages and currencies
- ✔ Respond quickly to executive inquiries, facilitating enhanced business decision-making

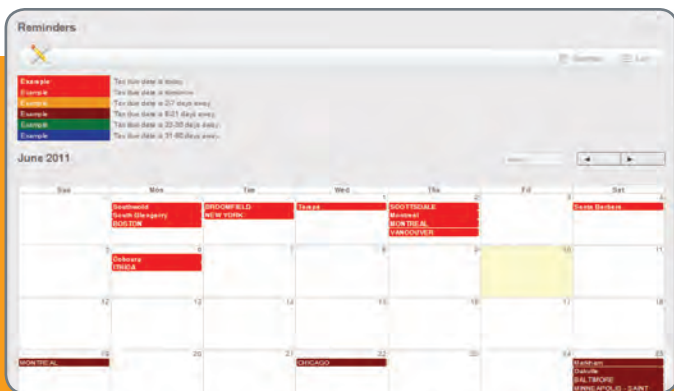
“ Prior to using iTAM Link we had good resources working inefficient activities - I say that in hindsight. ”

Manager Finance, REIT

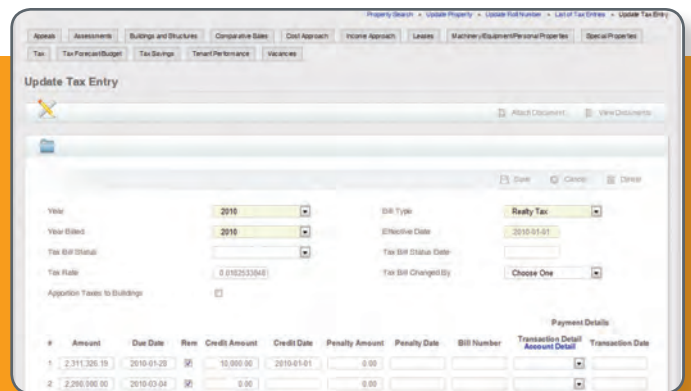
iTAM Link



Tax Reminders



Tax Module



A fully integrated component of iTAM Link, iTAM Docs provides accessibility to, and secure storage of, important files and documents at the click of a mouse

iTAM Docs is a central file and document repository that automatically links files and documents to their appropriate data records either at the property level or parcel/account level for simple archiving and retrieval.

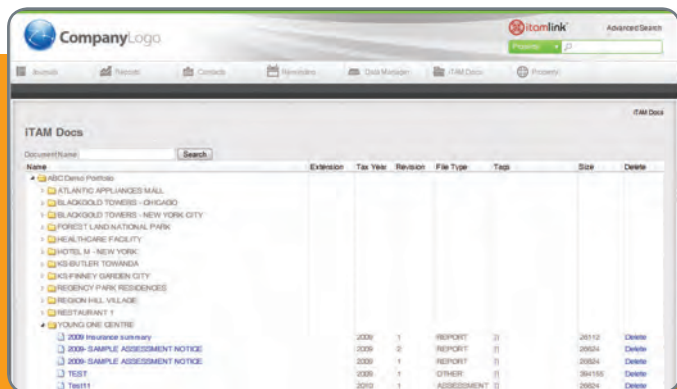
- ✔ Upload files and documents and have them associated with specific properties and parcel numbers
- ✔ Store, index and categorize all real estate related collateral for fast and easy archival and retrieval
- ✔ Control access to sensitive files and documents by assigning desired user rights and access privileges
- ✔ Recover documents and files in the event of disaster from secure, daily backups



“ We are now managing the process instead of it managing us. ”

Manager Taxation,
Major Retailer

iTAM Docs Browser



iTAM Docs File Detail



Information is Power and the Power is in the Reports

iTAM Reports provides real-time, menu-driven reports that are fine tuned to meet a broad range of client needs. Designed by property tax specialists, iTAM Link's electronic reports are easily produced, accessed, viewed and distributed. Reports are generated and filtered with a few clicks of the mouse and can be viewed and downloaded as HTML, PDF, Microsoft Excel, CSV, Graphs/Charts, Text or XML files.

Specific Features of iTAM Reports:

- ✓ User-friendly interface for creating management reports
- ✓ Optimized to generate reports quickly and on demand
- ✓ Flexible reporting options that provide opportunities to analyze data and monitor portfolios
- ✓ Standard and custom reporting capabilities that put important tax and assessment information at your fingertips
- ✓ Consolidated view of property tax related data with detailed comparisons, graphs and charts
- ✓ Highly customizable to suit the needs and requirements of any organization
- ✓ Viewable in a variety of languages and currencies

Thorough Management Reports That Are Easy to Read and Understand

- ✓ Fixed Asset Inventories
- ✓ Assessment and Tax Comparisons
- ✓ Tax Installments and Cash Flow
- ✓ Budgeting and Variance
- ✓ Appeals and Tax Savings
- ✓ Income, Cost and Sales Valuation
- ✓ Building and Tenant Allocations
- ✓ Payment Approvals and Audits
- ✓ Custom Reports
- ✓ And many more

Sample Report

| NAME | ADDRESS | CITY | STATE | COUNTRY | ASSESSMENT YEAR | TAX YEAR |
|--------------|-----------------------------|------------|---------------|---------------|-----------------|-----------|
| DISTRIBUTION | 350 SHIMMERS BLVD | VINCENNES | Canada | North America | 2010 | Ready Tax |
| DISTRIBUTION | 3050 HIGH STREET | BIRMINGHAM | Great Britain | Europe | 2008 | Ready Tax |
| DISTRIBUTION | 11100 151 | TORONTO | Canada | North America | 2010 | Ready Tax |
| DISTRIBUTION | 300 ACTON ROAD | OSWEGO | Ontario | North America | 2010 | Ready Tax |
| DISTRIBUTION | 1980 WEST HIGH STREET NORTH | BALTIMORE | United States | North America | 2010 | Ready Tax |
| DISTRIBUTION | 1980 WEST HIGH STREET NORTH | BALTIMORE | United States | Europe | 2008 | Ready Tax |
| DISTRIBUTION | 1980 WEST HIGH STREET NORTH | BALTIMORE | United States | North America | 2009 | Ready Tax |
| DISTRIBUTION | 1980 WEST HIGH STREET NORTH | BALTIMORE | United States | North America | 2010 | Ready Tax |
| HOTEL | 811 7TH AVE | NEW YORK | New York | United States | 2010 | Ready Tax |
| OFFICE | 1810 BULLER BLVD | BROOKFIELD | Colorado | North America | 2010 | Ready Tax |
| OFFICE | 1810 BULLER BLVD | BROOKFIELD | Colorado | North America | 2009 | Ready Tax |
| OFFICE | 1810 BULLER BLVD | BROOKFIELD | Colorado | North America | 2008 | Ready Tax |
| OFFICE | 1810 BULLER BLVD | BROOKFIELD | Colorado | North America | 2007 | Ready Tax |
| OFFICE | 1810 BULLER BLVD | BROOKFIELD | Colorado | North America | 2006 | Ready Tax |
| OFFICE | 1810 BULLER BLVD | BROOKFIELD | Colorado | North America | 2005 | Ready Tax |
| OFFICE | 1810 BULLER BLVD | BROOKFIELD | Colorado | North America | 2004 | Ready Tax |
| OFFICE | 1810 BULLER BLVD | BROOKFIELD | Colorado | North America | 2003 | Ready Tax |
| OFFICE | 1810 BULLER BLVD | BROOKFIELD | Colorado | North America | 2002 | Ready Tax |
| OFFICE | 1810 BULLER BLVD | BROOKFIELD | Colorado | North America | 2001 | Ready Tax |
| OFFICE | 1810 BULLER BLVD | BROOKFIELD | Colorado | North America | 2000 | Ready Tax |
| OFFICE | 1810 BULLER BLVD | BROOKFIELD | Colorado | North America | 1999 | Ready Tax |
| OFFICE | 1810 BULLER BLVD | BROOKFIELD | Colorado | North America | 1998 | Ready Tax |
| OFFICE | 1810 BULLER BLVD | BROOKFIELD | Colorado | North America | 1997 | Ready Tax |
| OFFICE | 1810 BULLER BLVD | BROOKFIELD | Colorado | North America | 1996 | Ready Tax |
| OFFICE | 1810 BULLER BLVD | BROOKFIELD | Colorado | North America | 1995 | Ready Tax |
| OFFICE | 1810 BULLER BLVD | BROOKFIELD | Colorado | North America | 1994 | Ready Tax |
| OFFICE | 1810 BULLER BLVD | BROOKFIELD | Colorado | North America | 1993 | Ready Tax |
| OFFICE | 1810 BULLER BLVD | BROOKFIELD | Colorado | North America | 1992 | Ready Tax |
| OFFICE | 1810 BULLER BLVD | BROOKFIELD | Colorado | North America | 1991 | Ready Tax |
| OFFICE | 1810 BULLER BLVD | BROOKFIELD | Colorado | North America | 1990 | Ready Tax |
| OFFICE | 1810 BULLER BLVD | BROOKFIELD | Colorado | North America | 1989 | Ready Tax |
| OFFICE | 1810 BULLER BLVD | BROOKFIELD | Colorado | North America | 1988 | Ready Tax |
| OFFICE | 1810 BULLER BLVD | BROOKFIELD | Colorado | North America | 1987 | Ready Tax |
| OFFICE | 1810 BULLER BLVD | BROOKFIELD | Colorado | North America | 1986 | Ready Tax |
| OFFICE | 1810 BULLER BLVD | BROOKFIELD | Colorado | North America | 1985 | Ready Tax |
| OFFICE | 1810 BULLER BLVD | BROOKFIELD | Colorado | North America | 1984 | Ready Tax |
| OFFICE | 1810 BULLER BLVD | BROOKFIELD | Colorado | North America | 1983 | Ready Tax |
| OFFICE | 1810 BULLER BLVD | BROOKFIELD | Colorado | North America | 1982 | Ready Tax |
| OFFICE | 1810 BULLER BLVD | BROOKFIELD | Colorado | North America | 1981 | Ready Tax |
| OFFICE | 1810 BULLER BLVD | BROOKFIELD | Colorado | North America | 1980 | Ready Tax |
| OFFICE | 1810 BULLER BLVD | BROOKFIELD | Colorado | North America | 1979 | Ready Tax |
| OFFICE | 1810 BULLER BLVD | BROOKFIELD | Colorado | North America | 1978 | Ready Tax |
| OFFICE | 1810 BULLER BLVD | BROOKFIELD | Colorado | North America | 1977 | Ready Tax |
| OFFICE | 1810 BULLER BLVD | BROOKFIELD | Colorado | North America | 1976 | Ready Tax |
| OFFICE | 1810 BULLER BLVD | BROOKFIELD | Colorado | North America | 1975 | Ready Tax |
| OFFICE | 1810 BULLER BLVD | BROOKFIELD | Colorado | North America | 1974 | Ready Tax |
| OFFICE | 1810 BULLER BLVD | BROOKFIELD | Colorado | North America | 1973 | Ready Tax |
| OFFICE | 1810 BULLER BLVD | BROOKFIELD | Colorado | North America | 1972 | Ready Tax |
| OFFICE | 1810 BULLER BLVD | BROOKFIELD | Colorado | North America | 1971 | Ready Tax |
| OFFICE | 1810 BULLER BLVD | BROOKFIELD | Colorado | North America | 1970 | Ready Tax |
| OFFICE | 1810 BULLER BLVD | BROOKFIELD | Colorado | North America | 1969 | Ready Tax |
| OFFICE | 1810 BULLER BLVD | BROOKFIELD | Colorado | North America | 1968 | Ready Tax |
| OFFICE | 1810 BULLER BLVD | BROOKFIELD | Colorado | North America | 1967 | Ready Tax |
| OFFICE | 1810 BULLER BLVD | BROOKFIELD | Colorado | North America | 1966 | Ready Tax |
| OFFICE | 1810 BULLER BLVD | BROOKFIELD | Colorado | North America | 1965 | Ready Tax |
| OFFICE | 1810 BULLER BLVD | BROOKFIELD | Colorado | North America | 1964 | Ready Tax |
| OFFICE | 1810 BULLER BLVD | BROOKFIELD | Colorado | North America | 1963 | Ready Tax |
| OFFICE | 1810 BULLER BLVD | BROOKFIELD | Colorado | North America | 1962 | Ready Tax |
| OFFICE | 1810 BULLER BLVD | BROOKFIELD | Colorado | North America | 1961 | Ready Tax |
| OFFICE | 1810 BULLER BLVD | BROOKFIELD | Colorado | North America | 1960 | Ready Tax |
| OFFICE | 1810 BULLER BLVD | BROOKFIELD | Colorado | North America | 1959 | Ready Tax |
| OFFICE | 1810 BULLER BLVD | BROOKFIELD | Colorado | North America | 1958 | Ready Tax |
| OFFICE | 1810 BULLER BLVD | BROOKFIELD | Colorado | North America | 1957 | Ready Tax |
| OFFICE | 1810 BULLER BLVD | BROOKFIELD | Colorado | North America | 1956 | Ready Tax |
| OFFICE | 1810 BULLER BLVD | BROOKFIELD | Colorado | North America | 1955 | Ready Tax |
| OFFICE | 1810 BULLER BLVD | BROOKFIELD | Colorado | North America | 1954 | Ready Tax |
| OFFICE | 1810 BULLER BLVD | BROOKFIELD | Colorado | North America | 1953 | Ready Tax |
| OFFICE | 1810 BULLER BLVD | BROOKFIELD | Colorado | North America | 1952 | Ready Tax |
| OFFICE | 1810 BULLER BLVD | BROOKFIELD | Colorado | North America | 1951 | Ready Tax |
| OFFICE | 1810 BULLER BLVD | BROOKFIELD | Colorado | North America | 1950 | Ready Tax |
| OFFICE | 1810 BULLER BLVD | BROOKFIELD | Colorado | North America | 1949 | Ready Tax |
| OFFICE | 1810 BULLER BLVD | BROOKFIELD | Colorado | North America | 1948 | Ready Tax |
| OFFICE | 1810 BULLER BLVD | BROOKFIELD | Colorado | North America | 1947 | Ready Tax |
| OFFICE | 1810 BULLER BLVD | BROOKFIELD | Colorado | North America | 1946 | Ready Tax |
| OFFICE | 1810 BULLER BLVD | BROOKFIELD | Colorado | North America | 1945 | Ready Tax |
| OFFICE | 1810 BULLER BLVD | BROOKFIELD | Colorado | North America | 1944 | Ready Tax |
| OFFICE | 1810 BULLER BLVD | BROOKFIELD | Colorado | North America | 1943 | Ready Tax |
| OFFICE | 1810 BULLER BLVD | BROOKFIELD | Colorado | North America | 1942 | Ready Tax |
| OFFICE | 1810 BULLER BLVD | BROOKFIELD | Colorado | North America | 1941 | Ready Tax |
| OFFICE | 1810 BULLER BLVD | BROOKFIELD | Colorado | North America | 1940 | Ready Tax |
| OFFICE | 1810 BULLER BLVD | BROOKFIELD | Colorado | North America | 1939 | Ready Tax |
| OFFICE | 1810 BULLER BLVD | BROOKFIELD | Colorado | North America | 1938 | Ready Tax |
| OFFICE | 1810 BULLER BLVD | BROOKFIELD | Colorado | North America | 1937 | Ready Tax |
| OFFICE | 1810 BULLER BLVD | BROOKFIELD | Colorado | North America | 1936 | Ready Tax |
| OFFICE | 1810 BULLER BLVD | BROOKFIELD | Colorado | North America | 1935 | Ready Tax |
| OFFICE | 1810 BULLER BLVD | BROOKFIELD | Colorado | North America | 1934 | Ready Tax |
| OFFICE | 1810 BULLER BLVD | BROOKFIELD | Colorado | North America | 1933 | Ready Tax |
| OFFICE | 1810 BULLER BLVD | BROOKFIELD | Colorado | North America | 1932 | Ready Tax |
| OFFICE | 1810 BULLER BLVD | BROOKFIELD | Colorado | North America | 1931 | Ready Tax |
| OFFICE | 1810 BULLER BLVD | BROOKFIELD | Colorado | North America | 1930 | Ready Tax |
| OFFICE | 1810 BULLER BLVD | BROOKFIELD | Colorado | North America | 1929 | Ready Tax |
| OFFICE | 1810 BULLER BLVD | BROOKFIELD | Colorado | North America | 1928 | Ready Tax |
| OFFICE | 1810 BULLER BLVD | BROOKFIELD | Colorado | North America | 1927 | Ready Tax |
| OFFICE | 1810 BULLER BLVD | BROOKFIELD | Colorado | North America | 1926 | Ready Tax |
| OFFICE | 1810 BULLER BLVD | BROOKFIELD | Colorado | North America | 1925 | Ready Tax |
| OFFICE | 1810 BULLER BLVD | BROOKFIELD | Colorado | North America | 1924 | Ready Tax |
| OFFICE | 1810 BULLER BLVD | BROOKFIELD | Colorado | North America | 1923 | Ready Tax |
| OFFICE | 1810 BULLER BLVD | BROOKFIELD | Colorado | North America | 1922 | Ready Tax |
| OFFICE | 1810 BULLER BLVD | BROOKFIELD | Colorado | North America | 1921 | Ready Tax |
| OFFICE | 1810 BULLER BLVD | BROOKFIELD | Colorado | North America | 1920 | Ready Tax |
| OFFICE | 1810 BULLER BLVD | BROOKFIELD | Colorado | North America | 1919 | Ready Tax |
| OFFICE | 1810 BULLER BLVD | BROOKFIELD | Colorado | North America | 1918 | Ready Tax |
| OFFICE | 1810 BULLER BLVD | BROOKFIELD | Colorado | North America | 1917 | Ready Tax |
| OFFICE | 1810 BULLER BLVD | BROOKFIELD | Colorado | North America | 1916 | Ready Tax |
| OFFICE | 1810 BULLER BLVD | BROOKFIELD | Colorado | North America | 1915 | Ready Tax |
| OFFICE | 1810 BULLER BLVD | BROOKFIELD | Colorado | North America | 1914 | Ready Tax |
| OFFICE | 1810 BULLER BLVD | BROOKFIELD | Colorado | North America | 1913 | Ready Tax |
| OFFICE | 1810 BULLER BLVD | BROOKFIELD | Colorado | North America | 1912 | Ready Tax |
| OFFICE | 1810 BULLER BLVD | BROOKFIELD | Colorado | North America | 1911 | Ready Tax |
| OFFICE | 1810 BULLER BLVD | BROOKFIELD | Colorado | North America | 1910 | Ready Tax |
| OFFICE | 1810 BULLER BLVD | BROOKFIELD | Colorado | North America | 1909 | Ready Tax |
| OFFICE | 1810 BULLER BLVD | BROOKFIELD | Colorado | North America | 1908 | Ready Tax |
| OFFICE | 1810 BULLER BLVD | BROOKFIELD | Colorado | North America | 1907 | Ready Tax |
| OFFICE | 1810 BULLER BLVD | BROOKFIELD | Colorado | North America | 1906 | Ready Tax |
| OFFICE | 1810 BULLER BLVD | BROOKFIELD | Colorado | North America | 1905 | Ready Tax |
| OFFICE | 1810 BULLER BLVD | BROOKFIELD | Colorado | North America | 1904 | Ready Tax |
| OFFICE | 1810 BULLER BLVD | BROOKFIELD | Colorado | North America | 1903 | Ready Tax |
| OFFICE | 1810 BULLER BLVD | BROOKFIELD | Colorado | North America | 1902 | Ready Tax |
| OFFICE | 1810 BULLER BLVD | BROOKFIELD | Colorado | North America | 1901 | Ready Tax |
| OFFICE | 1810 BULLER BLVD | BROOKFIELD | Colorado | North America | 1900 | Ready Tax |
| OFFICE | 1810 BULLER BLVD | BROOKFIELD | Colorado | North America | 1899 | Ready Tax |
| OFFICE | 1810 BULLER BLVD | BROOKFIELD | Colorado | North America | 1898 | Ready Tax |
| OFFICE | 1810 BULLER BLVD | BROOKFIELD | Colorado | North America | 1897 | Ready Tax |
| OFFICE | 1810 BULLER BLVD | BROOKFIELD | Colorado | North America | 1896 | Ready Tax |
| OFFICE | 1810 BULLER BLVD | BROOKFIELD | Colorado | North America | 1895 | Ready Tax |
| OFFICE | 1810 BULLER BLVD | BROOKFIELD | Colorado | North America | 1894 | Ready Tax |
| OFFICE | 1810 BULLER BLVD | BROOKFIELD | Colorado | North America | 1893 | Ready Tax |
| OFFICE | 1810 BULLER BLVD | BROOKFIELD | Colorado | North America | 1892 | Ready Tax |
| OFFICE | 1810 BULLER BLVD | BROOKFIELD | Colorado | North America | 1891 | Ready Tax |
| OFFICE | 1810 BULLER BLVD | BROOKFIELD | Colorado | North America | 1890 | Ready Tax |
| OFFICE | 1810 BULLER BLVD | BROOKFIELD | Colorado | North America | 1889 | Ready Tax |
| OFFICE | 1810 BULLER BLVD | BROOKFIELD | Colorado | North America | 1888 | Ready Tax |
| OFFICE | 1810 BULLER BLVD | BROOKFIELD | Colorado | North America | 1887 | Ready Tax |
| OFFICE | 1810 BULLER BLVD | BROOKFIELD | Colorado | North America | 1886 | Ready Tax |
| OFFICE | 1810 BULLER BLVD | BROOKFIELD | Colorado | North America | 1885 | Ready Tax |
| OFFICE | 1810 BULLER BLVD | BROOKFIELD | Colorado | North America | 1884 | Ready Tax |
| OFFICE | 1810 BULLER BLVD | BROOKFIELD | Colorado | North America | 1883 | Ready Tax |
| OFFICE | 1810 BULLER BLVD | BROOKFIELD | Colorado | North America | 1882 | Ready Tax |
| OFFICE | 1810 BULLER BLVD | BROOKFIELD | Colorado | North America | 1881 | Ready Tax |
| OFFICE | 1810 BULLER BLVD | BROOKFIELD | Colorado | North America | 1880 | Ready Tax |
| OFFICE | 1810 BULLER BLVD | BROOKFIELD | Colorado | North America | 1879 | Ready Tax |
| OFFICE | 1810 BULLER BLVD | BROOKFIELD | Colorado | North America | 1878 | Ready Tax |
| OFFICE | 1810 BULLER BLVD | BROOKFIELD | Colorado | North America | 1877 | Ready Tax |
| OFFICE | 1810 BULLER BLVD | BROOKFIELD | Colorado | North America | 1876 | Ready Tax |
| OFFICE | 1810 BULLER BLVD | BROOKFIELD | Colorado | North America | 1875 | Ready Tax |
| OFFICE | 1810 BULLER BLVD | BROOKFIELD | Colorado | North America | 1874 | Ready Tax |
| OFFICE | 1810 BULLER BLVD | BROOKFIELD | Colorado | North America | 1873 | Ready Tax |
| OFFICE | 1810 BULLER BLVD | BROOKFIELD | Colorado | North America | 1872 | Ready Tax |
| OFFICE | 1810 BULLER BLVD | BROOKFIELD | Colorado | North America | 1871 | Ready Tax |
| OFFICE | 1810 BULLER BLVD | BROOKFIELD | Colorado | North America | 1870 | Ready Tax |
| OFFICE | 1810 BULLER BLVD | BROOKFIELD | Colorado | North America | 1869 | Ready Tax |
| OFFICE | 1810 BULLER BLVD | BROOKFIELD | Colorado | North America | 1868 | Ready Tax |
| OFFICE | 1810 BULLER BLVD | BROOKFIELD | Colorado | North America | 1867 | Ready Tax |
| OFFICE | 1810 BULLER BLVD | BROOKFIELD | Colorado | North America | 1866 | Ready Tax |
| OFFICE | 1810 BULLER BLVD | BROOKFIELD | Colorado | North America | 1865 | Ready Tax |
| OFFICE | 1810 BULLER BLVD | BROOKFIELD | Colorado | North America | 1864 | Ready Tax |
| OFFICE | 1810 BULLER BLVD | BROOKFIELD | Colorado | North America | 1863 | Ready Tax |
| OFFICE | 1810 BULLER BLVD | BROOKFIELD | Colorado | North America | 1862 | Ready Tax |
| OFFICE | 1810 BULLER BLVD | BROOKFIELD | Colorado | North America | 1861 | Ready Tax |
| OFFICE | 1810 BULLER BLVD | BROOKFIELD | Colorado | North America | 1860 | Ready Tax |
| OFFICE | 1810 BULLER BLVD | BROOKFIELD | Colorado | North America | 1859</ | |

Eliminate manual data entry while increasing accuracy and turnaround time

iTAM Capture eliminates the need for manual data entry by extracting relevant property tax related information found in tax bills and assessment notices. Extracted data is automatically populated in iTAM Link and electronic versions of these documents are uploaded seamlessly to iTAM Docs. The power of iTAM Capture lies in its proprietary rule sets and validation schemes. These features enable accurate and complete data entry directly from scanned property tax related collateral to iTAM Link.

Data Capture and Recognition Framework

Automatically capture, recognize and enter data from property tax bills and assessment notices to iTAM Link.

Immediately upload and catalog scanned files and documents to iTAM Docs (property by property and/or parcel by parcel).

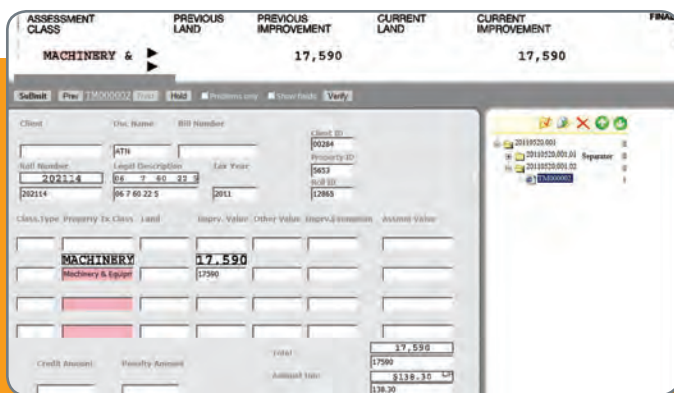
Perform data verification with an easy to use, point and click interface.

Execute every stage of the iTAM Capture process via the web, including data verification.

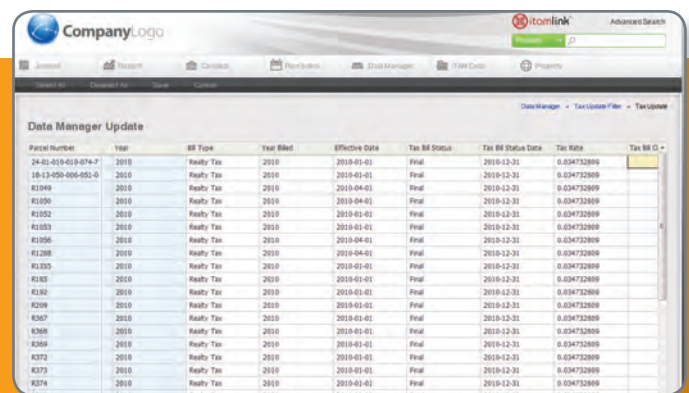
Key Benefits

- ✓ Improve data entry time
- ✓ Eliminate input errors
- ✓ Minimize data processing costs
- ✓ Reduce the number of full time equivalents required to perform data entry
- ✓ Enable remote scanning and data verification to increase productivity and maximize efficiency

iTAM Capture Verification



Data Manager



Unique tools for mass copying, pasting, editing, importing and exporting of property tax related data

iTAM Data Manager enables iTAM Link users to effectively and efficiently manage multiple data records simultaneously. Instead of inserting and editing information one record at a time, users can now manage their data en masse using the following features:

Mass Roll Over

Copy data from one tax year to the next across a variety of data modules including tax, assessment, budget/forecast, appeals and many more.

Mass Update

Using our highly customizable grid, edit and maintain data across an assortment of tax years within a host of data modules.

Show, hide and freeze columns to easily manage data across data modules.

Mass Copy/Paste and Import/Export

Copy and paste data from within the data grid or from other popular spreadsheet and database programs such as Microsoft Excel.

Export data from within the data grid to third party spreadsheet and database applications.

| iTAM Link Data Management Modules | |
|--|---|
| Tax Bill Management and Processing | Assessment Values |
| Fixed Asset Inventories | Deadline Tracking and Payment Alerts |
| Tax Forecasting and Budgeting | Valuation Analysis (Cost, Income and Sales) |
| Documents and Files | Leases and Tenants |
| Insurance and Risk | Contacts |
| Appeals and Tax Savings Administration | Vacant Space |

For more information or to book a demonstration of iTAM Link, call
 416.224.8354 (Canada) • 212.851.3624 (United States) • Toll Free 1-877-454-iTAM (4826)
 Email: itamsales@itamlink.com

www.itamlink.com | www.rethinksolutions.com



ABOUT RETHINK SOLUTIONS

Rethink Solutions Inc. (RSI) is an industry leading developer and vendor of web based, real estate asset management solutions in the areas of property tax and assessment, occupancy cost and insurance management.

RSI has been proudly serving customers since 2001 and continues to be a market leader with a client base that includes many Fortune 500 companies. Our continued success is derived from our long term relationships with the world's leading businesses. We work closely with our clients and their unique portfolios in order to provide solutions tailored specifically to our clients' needs.

RSI seeks to eliminate the need to work from multiple systems when servicing different regional portfolios, thereby reducing duplication of effort. Through our dedicated client services team and innovative, globally-accessible technology, RSI is the Global 2000 company's answer for achieving optimal real estate asset management oversight, including greater control of property taxation and other occupancy costs.

RSI's primary objective is to facilitate the union and integration of people, processes, information and technology. We implement solutions that fit the needs and budget of any organization.

For more information or to book a demonstration of iTAM Link, call
416.224.8354 (Canada) • 212.851.3624 (United States) • Toll Free 1-877-454-iTAM (4826)
Email: itamsales@itamlink.com

www.itamlink.com | www.rethinksolutions.com